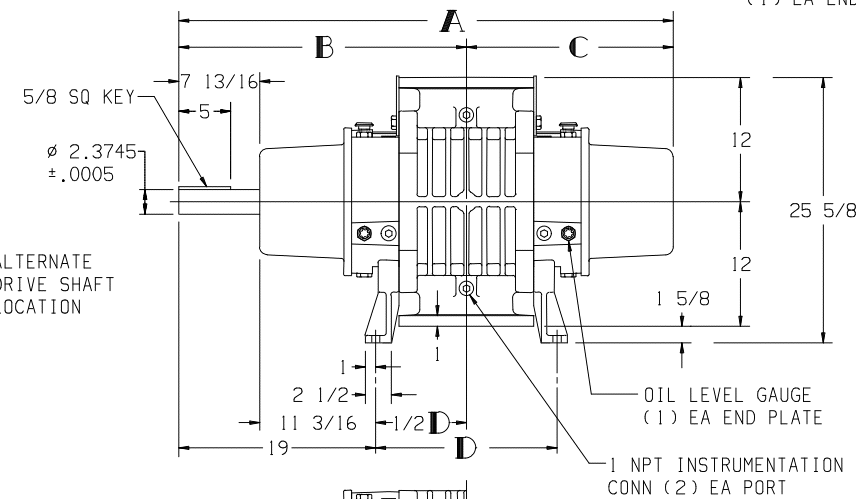
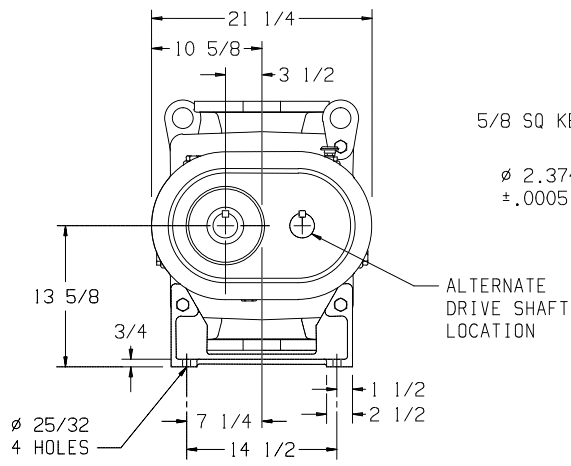
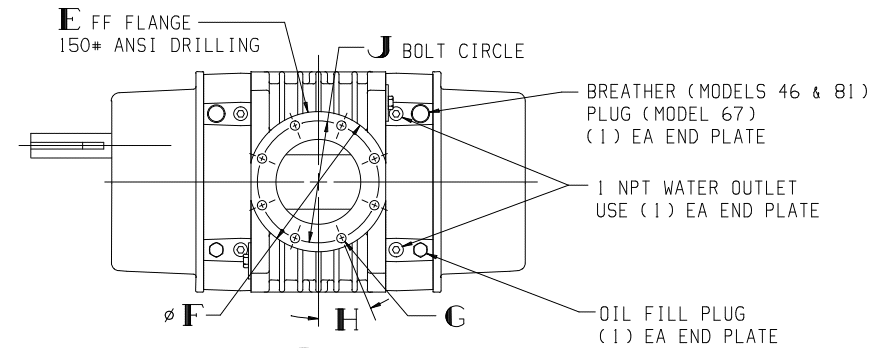


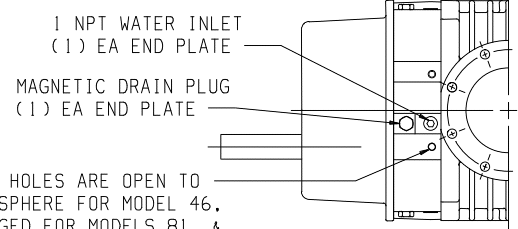
LTR	REVISION	DATE	DR	CH
G	1) UPDATED TABULATED DIM LETTERS 2) ADDED ALTERNATE DRIVE SHAFT LOCATION (ECN 2596)	2-13-97	SD	CM

MODEL	A	B	C	D	E	F	G		H	J	WEIGHT LBS
							Ø	NO.			
7010	44 15/16	26 3/8	18 9/16	14 3/4	6	11	7/8	8	22 1/2°	9 1/2	1050
7013	47 1/16	27 3/4	19 15/16	17 1/2	8	13 1/2	7/8	8	22 1/2°	11 3/4	1150
7017	51 1/16	29 3/4	21 15/16	21 1/2	10	16	1	12	15°	14 1/4	1275
7021	55 1/16	31 3/4	23 15/16	25 1/2	12	19	1	12	15°	17	1450
7026	60 1/16	34 1/4	26 7/16	30 1/2	12	19	1	12	15°	17	1600



NOTE:


- REFER TO CURRENT MAINTENANCE MANUAL FOR SERVICE INSTRUCTIONS. FIELD CONVERSION OF DRIVE SHAFT LOCATION OR CHANGING TO HORIZONTAL FLOW.
- COOLING WATER SPECIFICATIONS WHEN REQD:
FLOW RATE: LESS THAN 2 GPM TOTAL
BOTH END PLATES
MAXIMUM PRESSURE: 75 PSIG



VENT HOLES ARE OPEN TO ATMOSPHERE FOR MODEL 46. PLUGGED FOR MODELS 81 & 67. (2) 3/8 NPT EA END PLATE. TO PURGE (MODELS 81 & 67 ONLY) CONNECT LINE TO BOTH HOLES.

NOTE: FEET LEFT OFF BOTTOM VIEW FOR CLARITY

7013 SHOWN

 TUTHILL Pneumatics Group Springfield, Missouri USA	
<p>BLOWER OUTLINE</p>	
<p>SIZE: C2</p>	<p>7000-46/67/81</p>
<p>DR SY 10-25-89</p>	<p>CH A0 10-27-89</p>