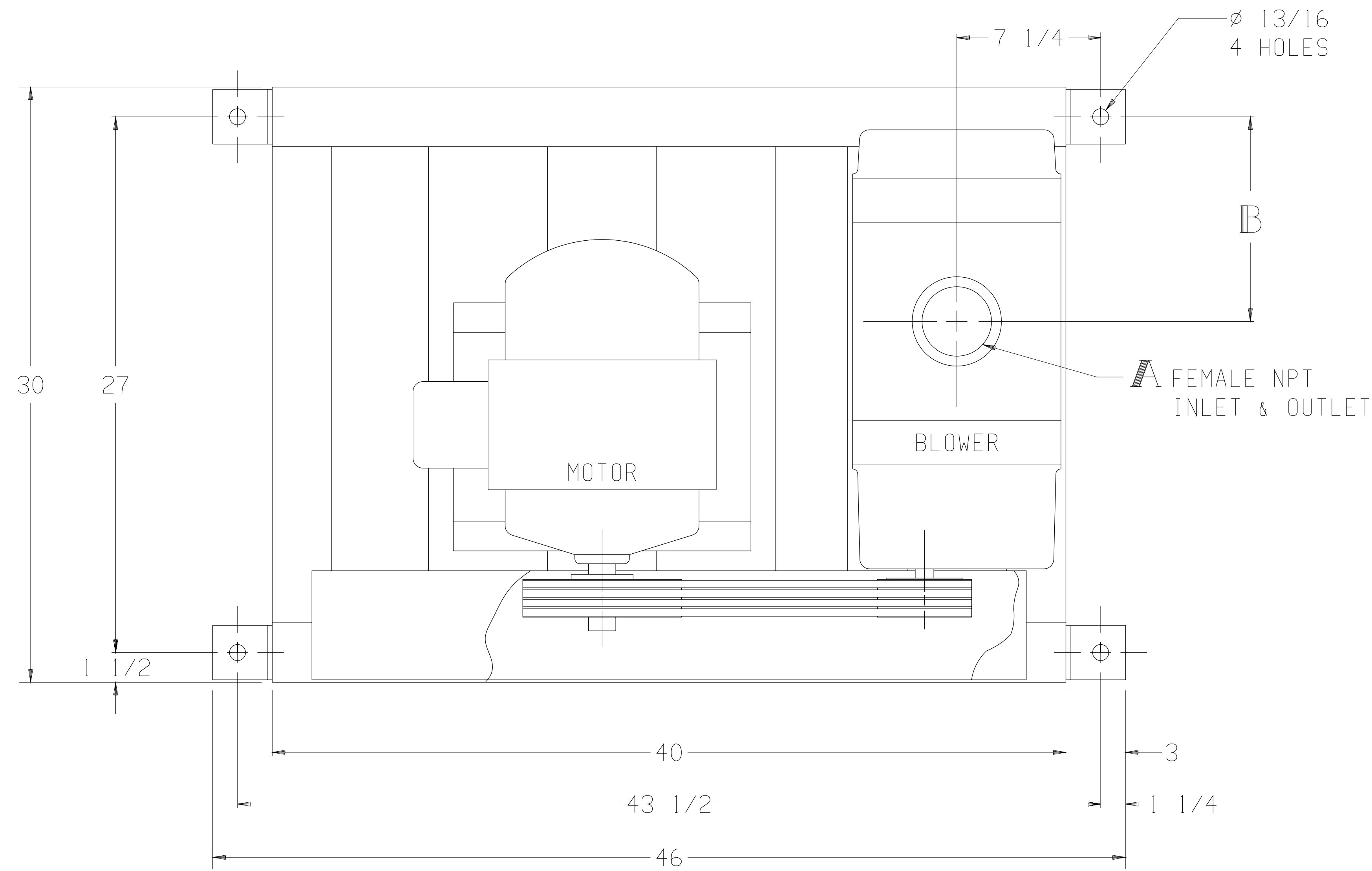
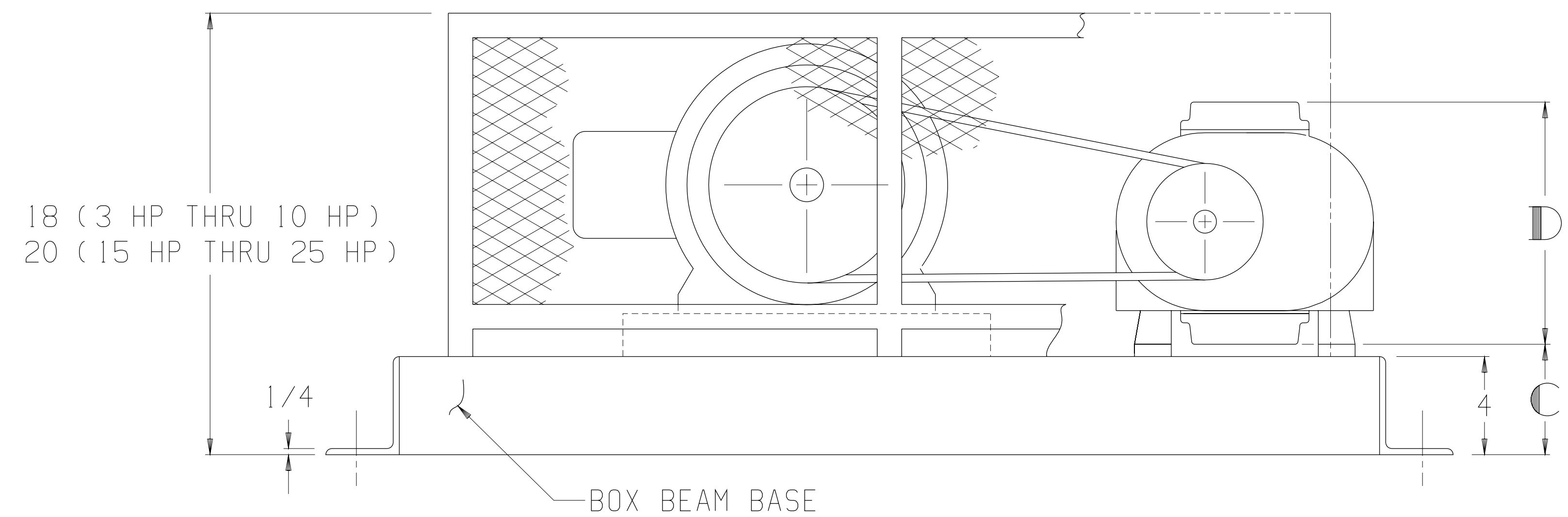


LTR	REVISION	DATE	DR	CH
C	REMOVED 47 SERIES (ECN 4767)	7-24-06	CM	CM



MOTOR W/SLIDE BASE		
1800 RPM, 230/460 V, 3 PH, 60 HZ		
HP	FRAME	TYPE
3	182T	ODP
5	184T	TEFC
7 1/2	213T	TEXP
10	215T	SEVERE DUTY TEFC
15	254T	SEVERE DUTY TEFC
20	256T	SEVERE DUTY TEXP
25	284T	SEVERE DUTY TEXP

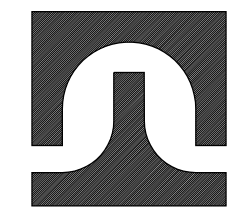
BLOWER	A	B	C	D
3206-46/81	2 1/2 NPT	12 5/16	4 1/2	10
3210-46/81	3 NPT	10 5/16	4	11



APPROXIMATE WEIGHT

BASE, DRIVE, & GUARD-	218	LBS
BLOWER	-	___
MOTOR & SLIDE BASE	-	___
TOTAL WEIGHT	-	___

THIS OUTLINE APPLIES TO THE BLOWERS AND MOTORS SHOWN IN TABLES



TUTHILL
Vacuum & Blower Systems
Springfield, Missouri USA

BASE MOUNTED OUTLINE B3200VV2

SIZE: C2

DR RA 9-23-88 CH CM 9-26-88