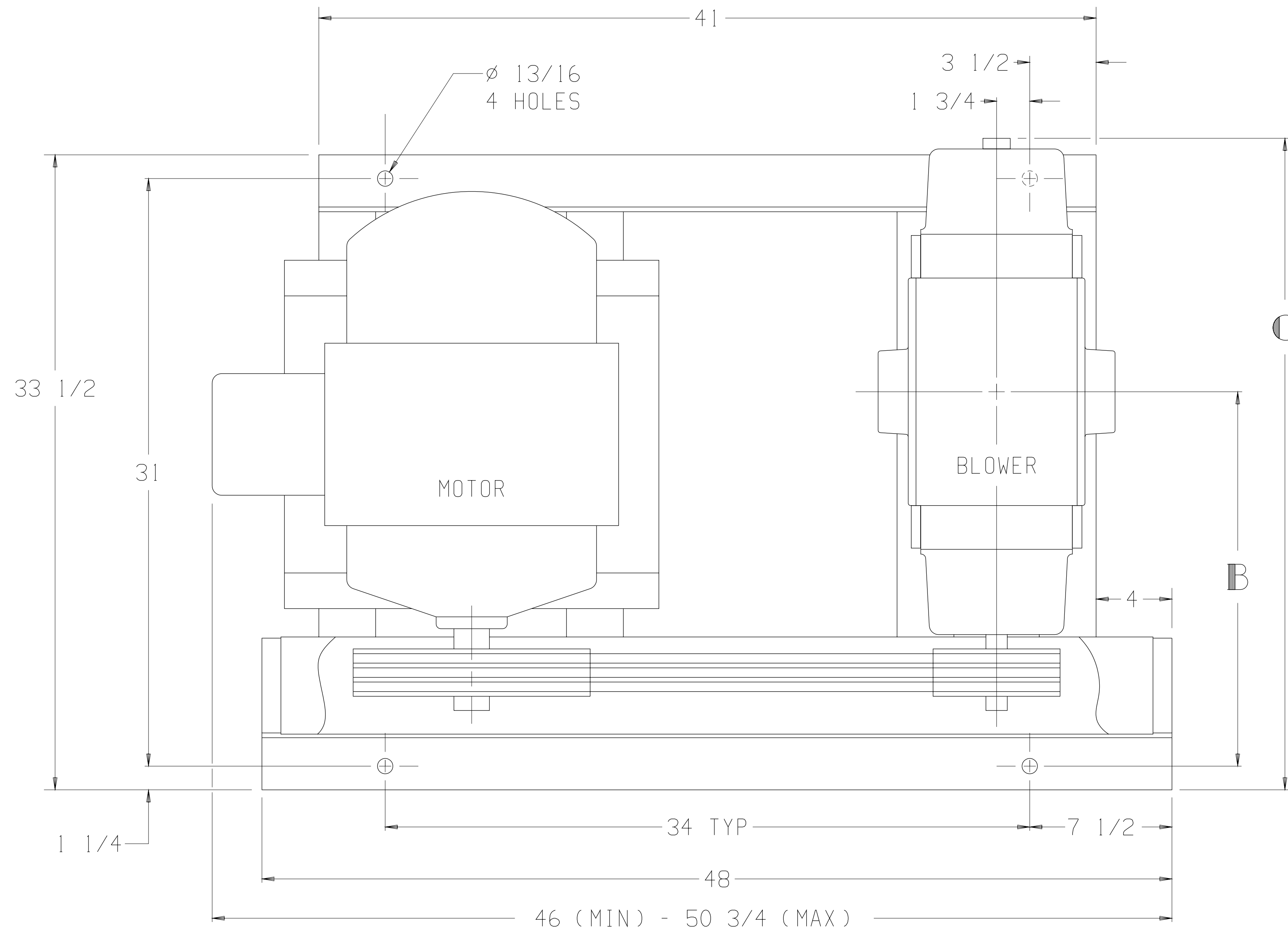


LTR	REVISION	DATE	DR	CH
D	REMOVED 16 SERIES (ECN 4767)	7-27-06	CM	CM



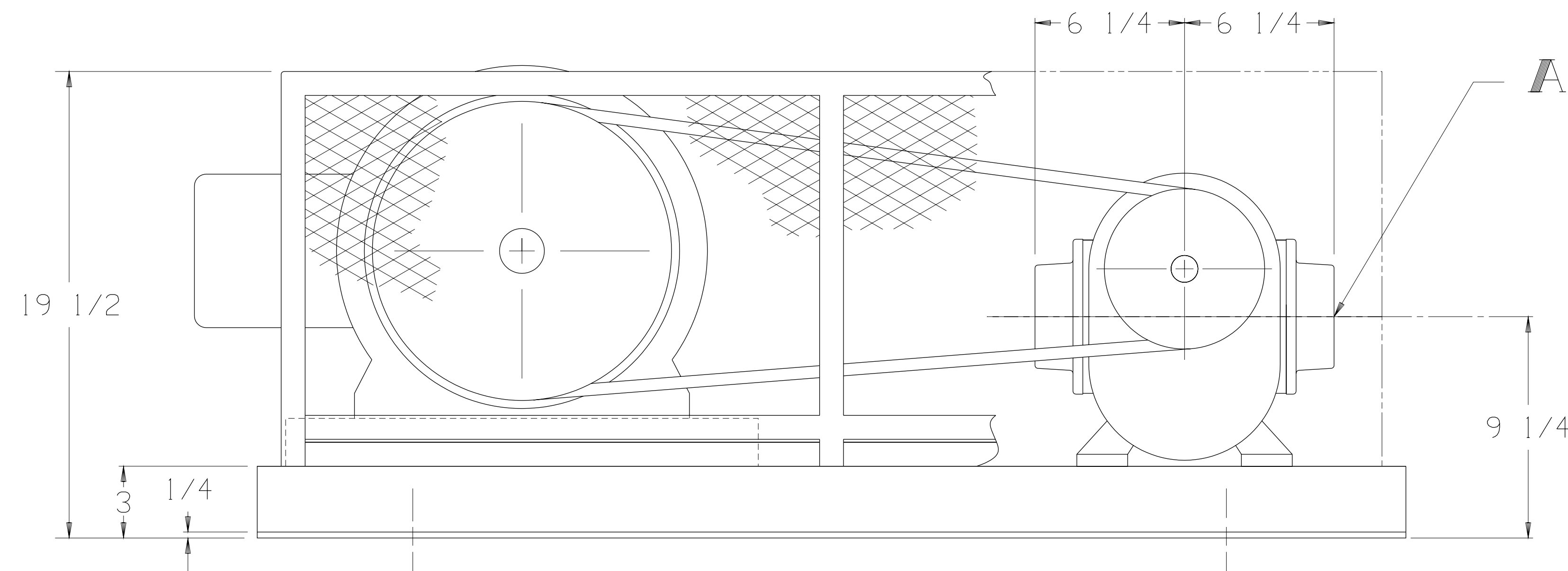
BLOWER	A	B	C
4006-17/57	3 NPT	16 3/4	—
4009-17/57	3 NPT	18 1/4	—
4012-17/57	4 NPT	19 3/4	34 3/8

MOTOR W/SLIDE BASE 1800 RPM, 230/460 V, 3 PH, 60 HZ		
HP	FRAME	TYPE
15	254T	ODP
20	256T	TEFC
25	284T	TEXP
30	286T	SEVERE DUTY TEFC
		SEVERE DUTY TEXP

APPROXIMATE WEIGHT

BASE, DRIVE, & GUARD - 148 LBS
 BLOWER - _____ LBS
 MOTOR & SLIDE BASE - _____ LBS

TOTAL WEIGHT - _____ LBS



THIS OUTLINE APPLIES TO THE BLOWERS
AND MOTORS SHOWN IN TABLES

TUTHILL
Vacuum & Blower Systems
Springfield, Missouri USA

BASE MOUNTED OUTLINE B4000HV2

SIZE:
C2

DR SY 9-1-88

CH CM 9-2-88