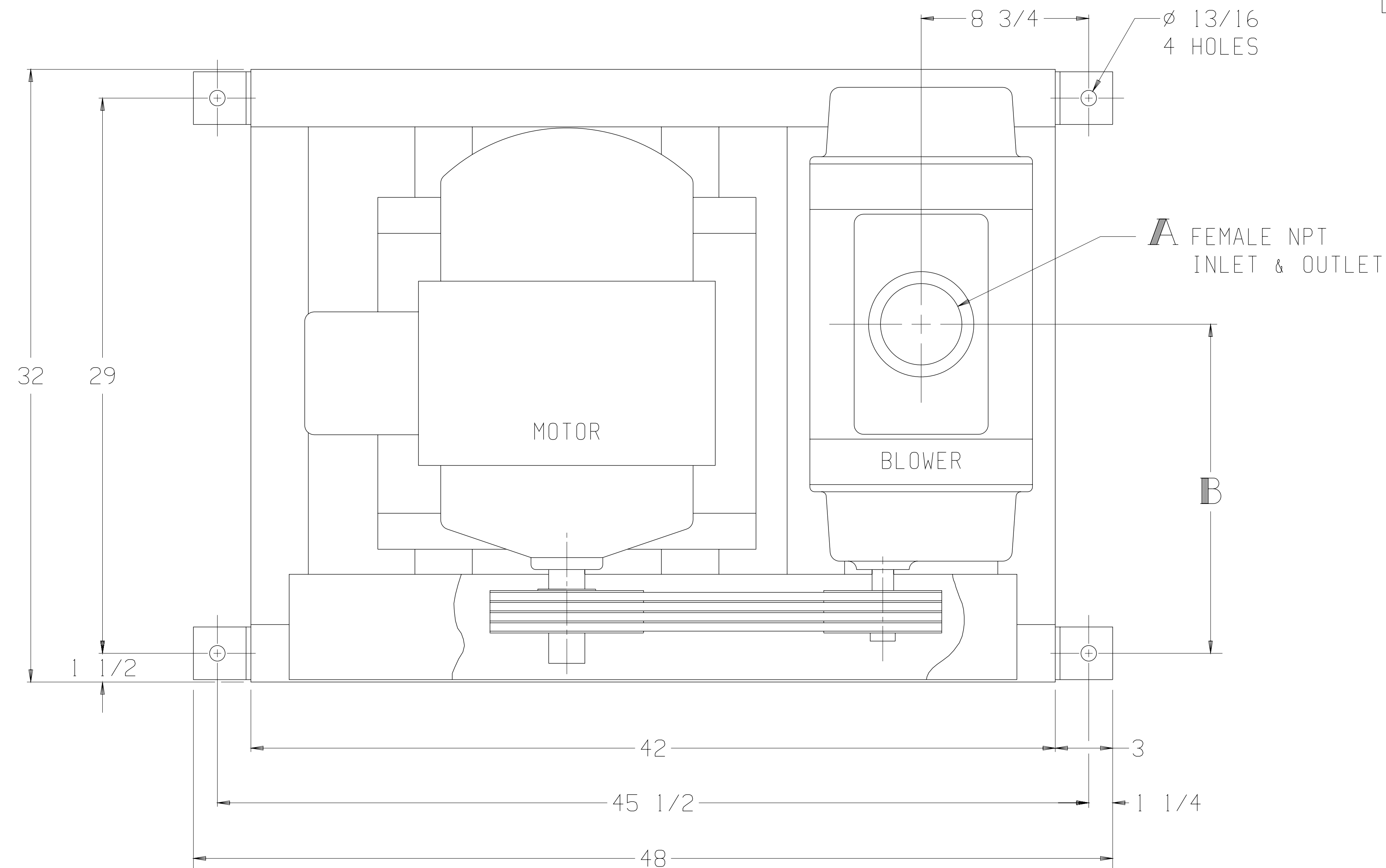


LTR	REVISION	DATE	DR	CH
C	REMOVED 47 SERIES (ECN 4767)	7-27-06	CM	CM

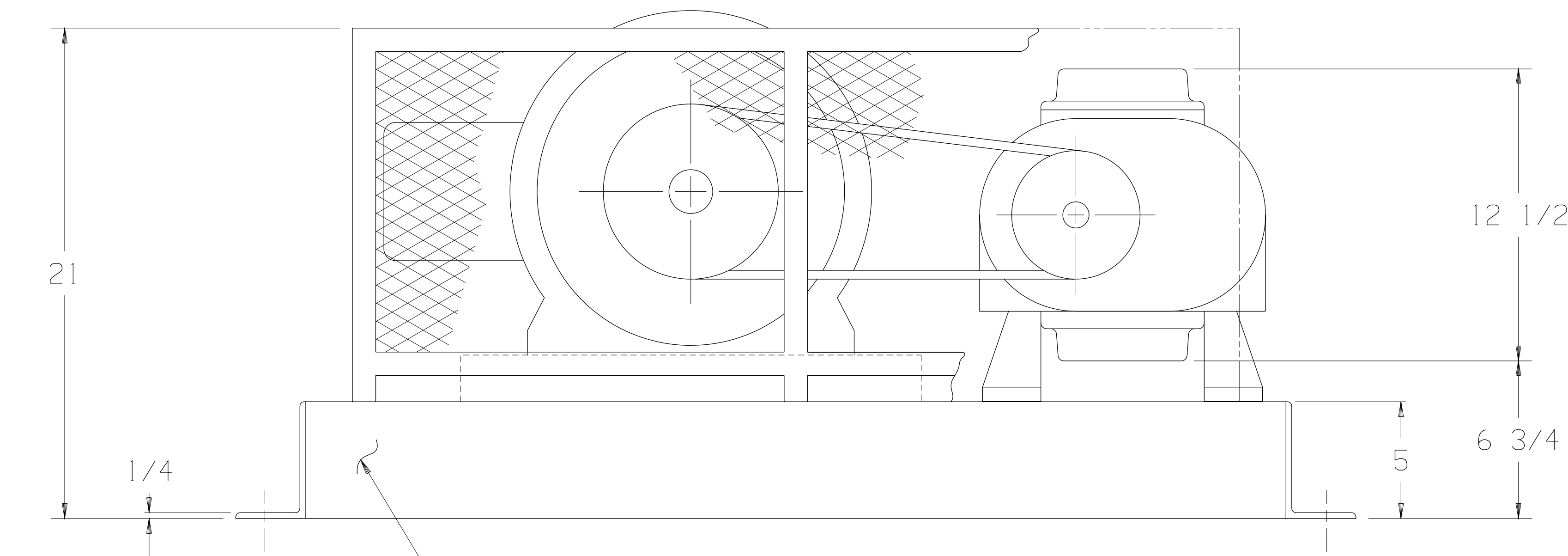


MOTOR W/SLIDE BASE		
1800 RPM, 230/460 V, 3 PH, 60 HZ		
HP	FRAME	TYPE
15	254T	ODP
20	256T	TEFC
25	284T	TEXP
30	286T	SEVERE DUTY TEFC
		SEVERE DUTY TEXP

BLOWER	A	B
4006-46/81	3 NPT	14 ³ / ₁₆
4009-46/81	3 NPT	15 ¹¹ / ₁₆
4012-46/81	4 NPT	17 ³ / ₁₆

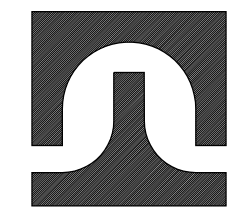
APPROXIMATE WEIGHT

BASE, DRIVE, & GUARD-	234	LBS
BLOWER	-	___
MOTOR & SLIDE BASE	-	___
TOTAL WEIGHT	-	___



BOX BEAM BASE

THIS OUTLINE APPLIES TO THE BLOWERS AND MOTORS SHOWN IN TABLES



TUTHILL
Vacuum & Blower Systems
Springfield, Missouri USA

BASE MOUNTED OUTLINE B4000VV2

SIZE: C2

DR BD 3-29-89 CH CM 4-4-89